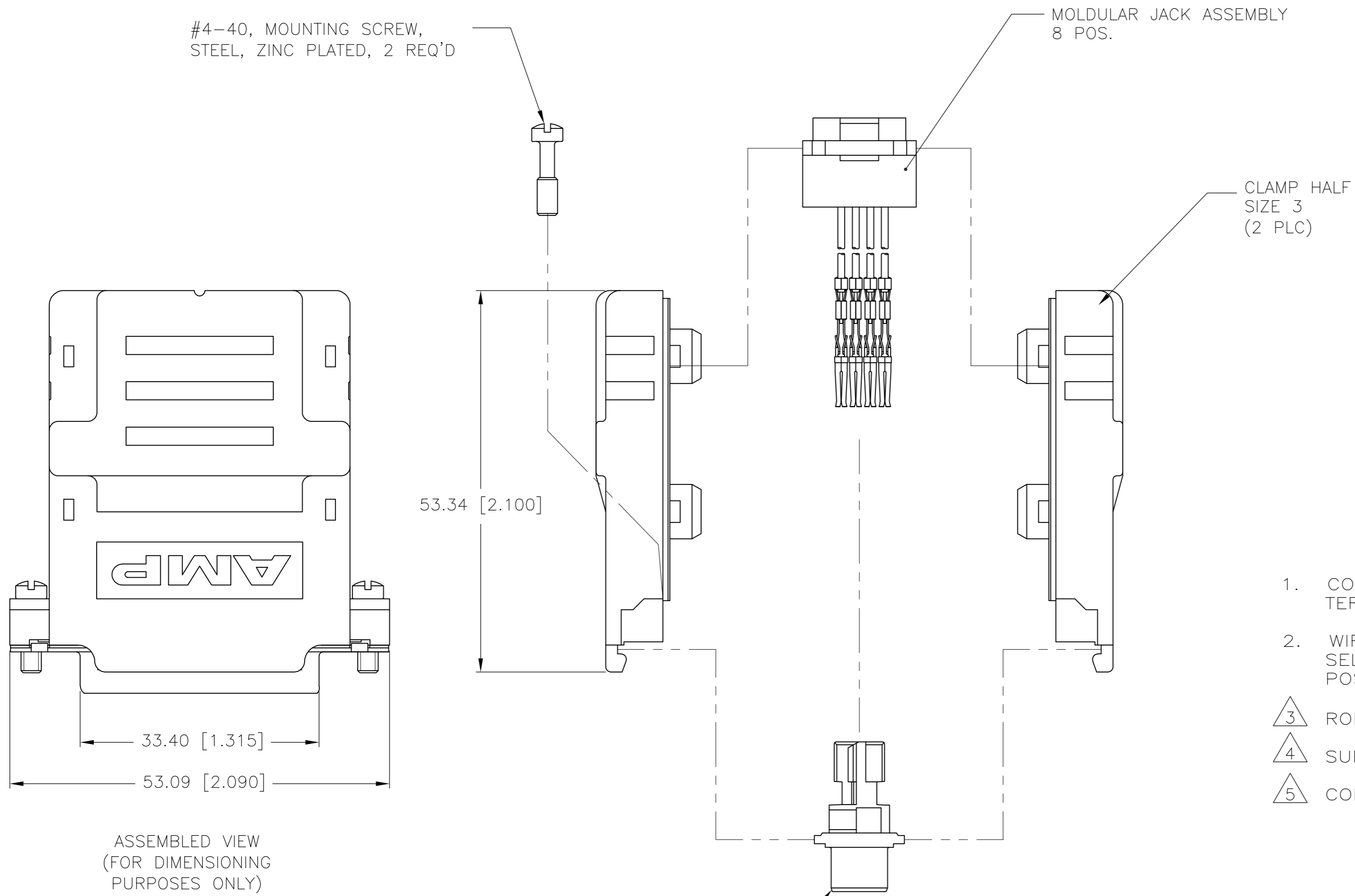


THIS DRAWING IS UNPUBLISHED. RELEASED FOR PUBLICATION
 © COPYRIGHT BY TYCO ELECTRONICS CORPORATION. ALL RIGHTS RESERVED.

LOC	DIST	REVISIONS			
P	LTR	DESCRIPTION	DATE	DWN	APVD
AD	00	G1	ECO-08-020713	18SEP08	MB JO



#4-40, MOUNTING SCREW,
STEEL, ZINC PLATED, 2 REQ'D

MOLDULAR JACK ASSEMBLY
8 POS.

CLAMP HALF
SIZE 3
(2 PLC)

53.34 [2.100]

33.40 [1.315]

53.09 [2.090]

ASSEMBLED VIEW
(FOR DIMENSIONING
PURPOSES ONLY)

HDE PLUG HOUSING
25 POS.

- COMPONENTS SHIPPED UNASSEMBLED, CONTACTS TERMINATED TO MODULAR JACK WIRES.
 - WIRING CONFIGURATION TO BE DETERMINED BY USER, SELECTIVELY LOADING CONTACTS INTO CIRCUIT POSITIONS.
- 3 ROHS 2002/95/EC COMPLIANT.
 - 4 SUPERSEDED BY 747772-3
 - 5 COMPONENTS ARE KIT BULK PACKED

OBSOLETE	3	747772-3
	5	747772-2
	4	747772-1
	REMARKS	PART NO.

THIS DRAWING IS A CONTROLLED DOCUMENT.		DWN M. BINNER 18SEP08	Tyco Electronics Corporation Harrisburg, Pa 17105-3608	
DIMENSIONS: mm [INCHES]		CHK J. OLSON 18SEP08	NAME	
TOLERANCES UNLESS OTHERWISE SPECIFIED:		APVD J. OLSON 18SEP08	RS 232 PLUG / MODULAR JACK, INTERFACE, CONNECTOR KIT, SIZE 3, AMPLIMITE	
0 PLC ± -		PRODUCT SPEC	SIZE A2	CAGE CODE 00779
1 PLC ± -		APPLICATION SPEC	DRAWING NO C=747772	RESTRICTED TO
2 PLC ± 0.25 [.010]		WEIGHT -	SCALE 2:1	SHEET 1 OF 1
3 PLC ± -		FINISH -	REV G1	
4 PLC ± -				
ANGLES ± -				
MATERIAL MOLDED PARTS: BLACK FLAME RETARDANT THERMOPLASTIC				
CUSTOMER DRAWING				